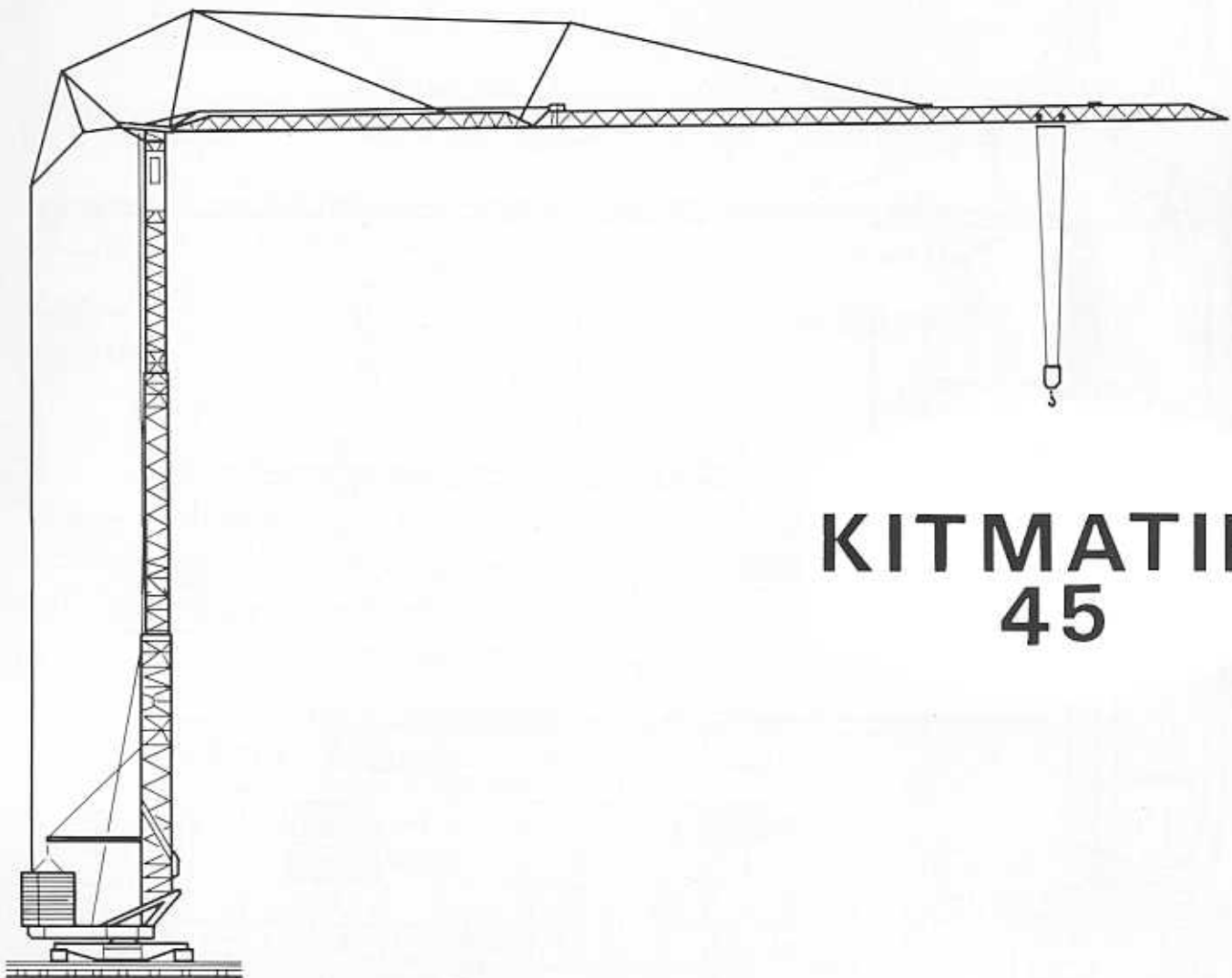


G M R C



**KITMATIK
45**

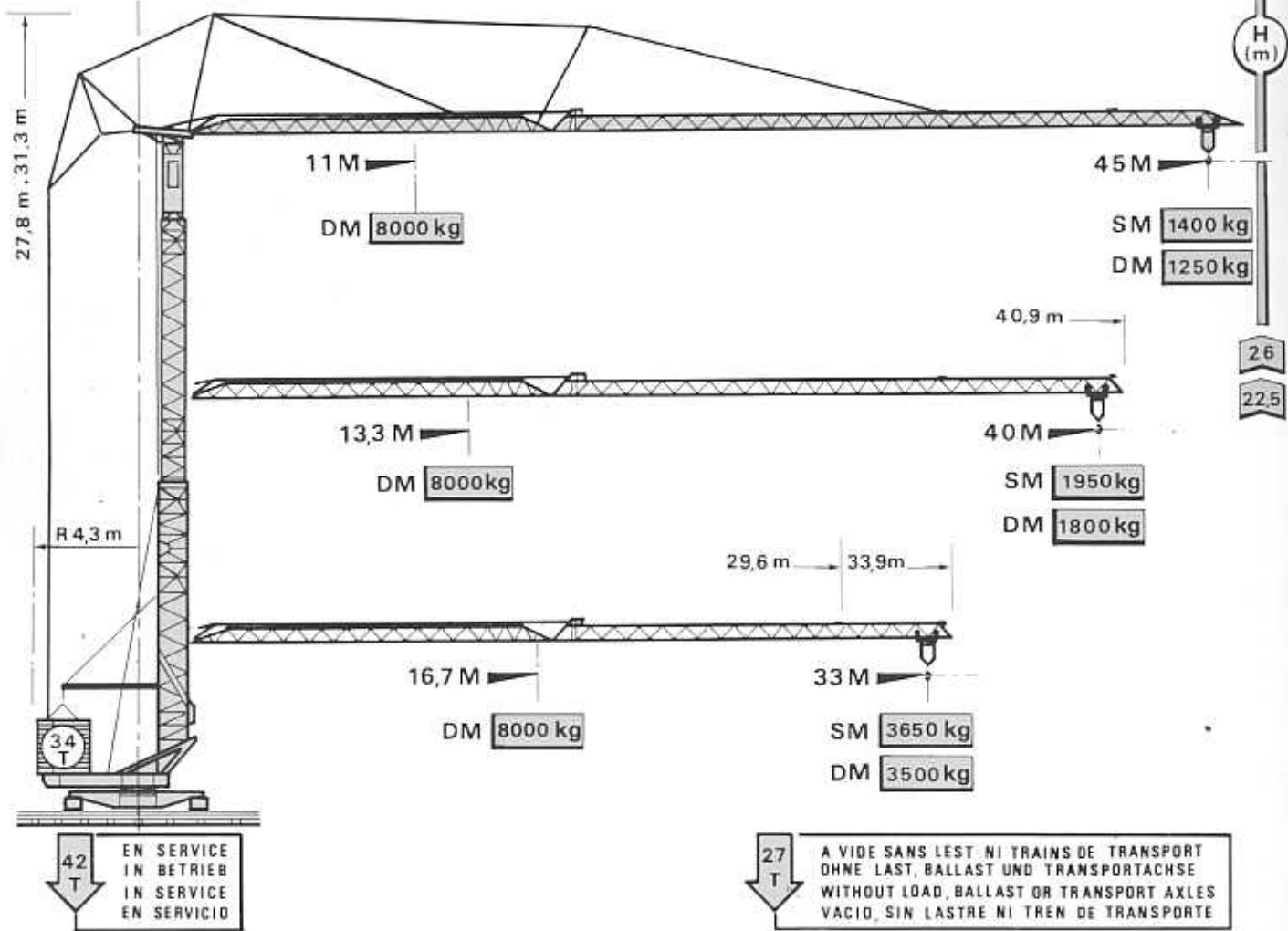
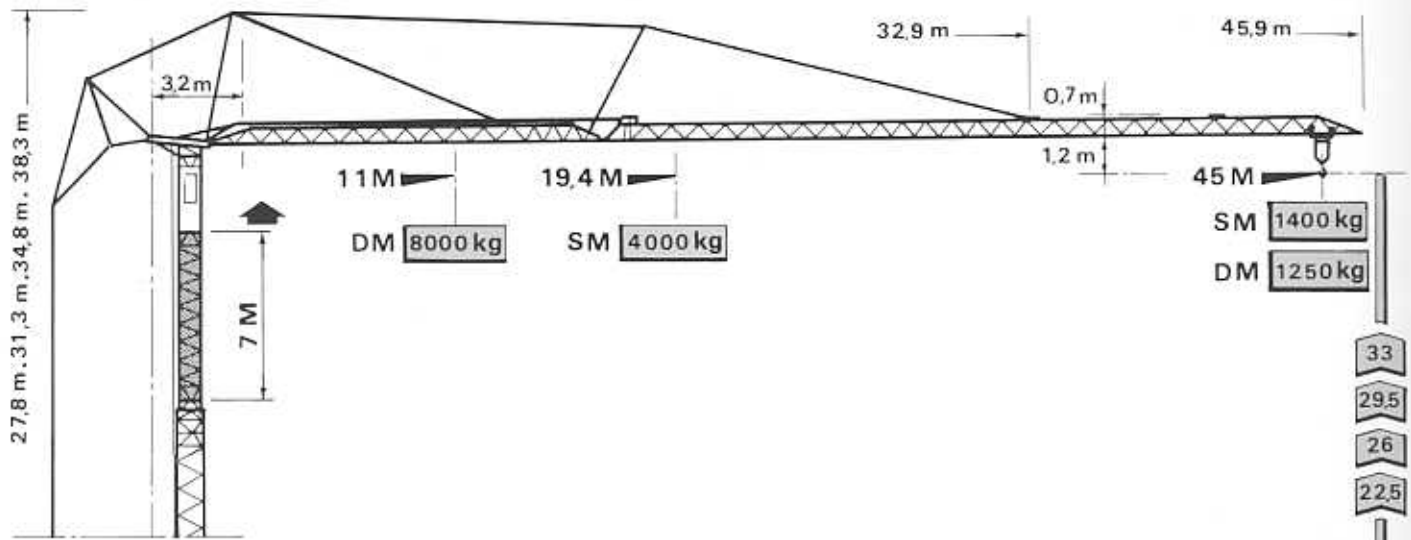
CADILLON

Cotes

Abmessungen

Dimensions

Dimensiones



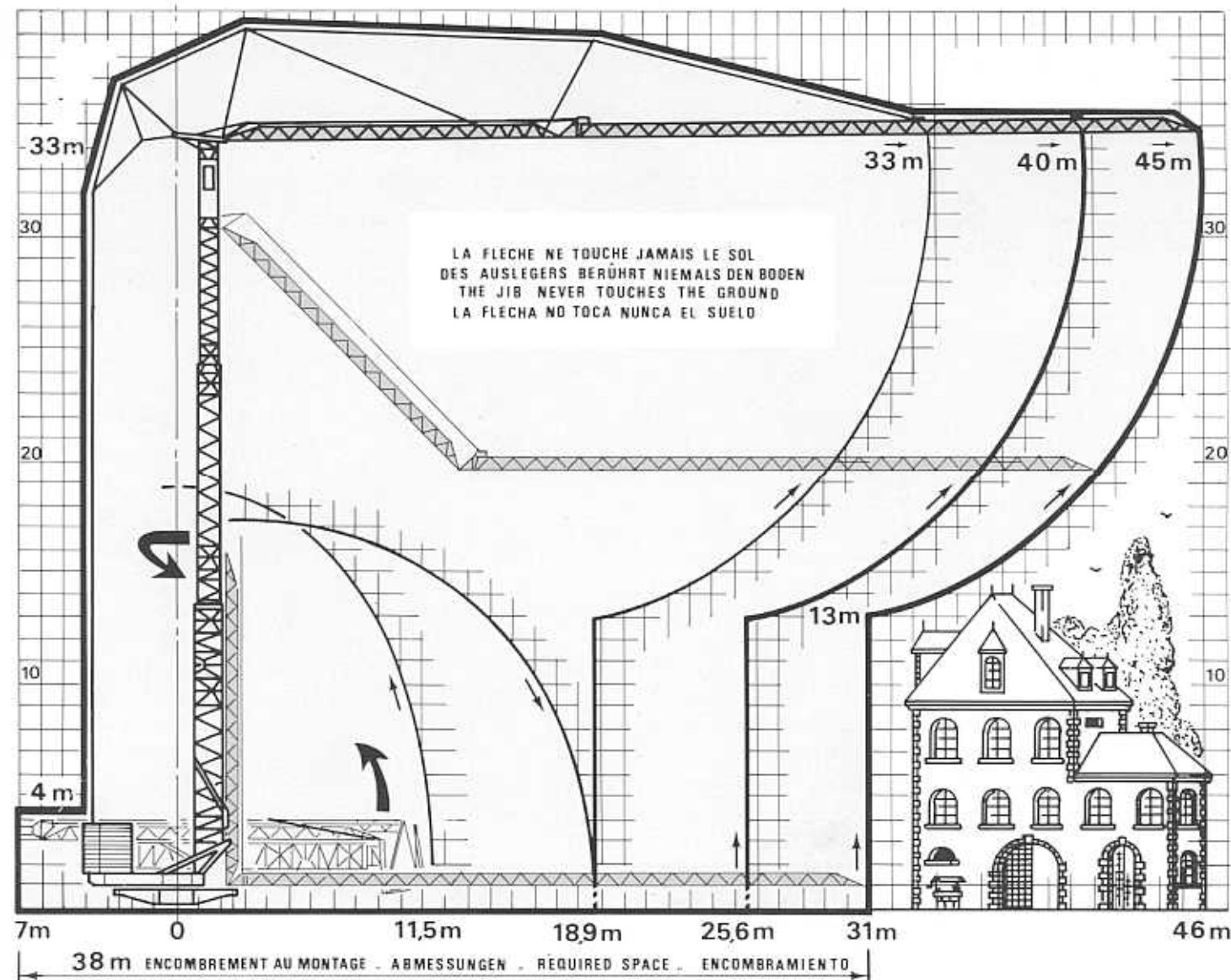
| DM SM | M | KITMATIK 45 | | | | | | | | | | | | | | | | |
|----------------------|------|-------------|------|------|------|------|------|------|------|------|------|------|------|------|------|------|------|--|
| | | KG | | | | | | | | | | | | | | | | |
| | | 11 | 12,4 | 16,7 | 19 | 21 | 23 | 25 | 27 | 29 | 31 | 33 | 35 | 37 | 40 | 43 | 45 | |
| 45 M 40 M 33 M | 45 M | 8000 | 6810 | 4660 | 3950 | 3480 | 3100 | 2780 | 2520 | 2290 | 2100 | 1930 | 1780 | 1650 | 1480 | 1340 | 1250 | |
| | 40 M | | 8000 | 5490 | 4670 | 4120 | 3680 | 3310 | 3000 | 2740 | 2520 | 2320 | 2150 | 2000 | 1800 | | | |
| | 33 M | | | 8000 | 6830 | 6050 | 5420 | 4900 | 4470 | 4100 | 3780 | 3500 | | | | | | |
| SM | | 19,4 | 22 | 22,2 | 27 | 29 | 30,5 | 31 | 33 | 35 | 37 | 39 | 40 | 43 | 45 | | | |
| 33 M 40 M 45 M | 33 M | | | | | | | 4000 | 3920 | 3650 | | | | | | | | |
| | 40 M | | | | 4000 | 3150 | 2890 | 2720 | 2670 | 2470 | 2300 | 2150 | 2010 | 1950 | | | | |
| | 45 M | 4000 | 3430 | 3390 | 2670 | 2440 | 2300 | 2250 | 2080 | 1930 | 1800 | 1690 | 1630 | 1490 | 1400 | | | |

Courbes de charges

Lastkurven

Load curves

Curvas de cargas



| KITMATIK 45 | | m/mn * | KW * | ch PS-HP * | KG |
|-------------|--|-----------------------------------------|---------------|---------------|-------|
| | | 3,75 | 4,4 | 6 | 8 000 |
| | | 15 | 20 | 27 | 8 000 |
| | | 30 | 20 | 27 | 4 000 |
| | | 3,75 | 4,4 | 6 | 8 000 |
| | | 7,5 | 4,4 | 6 | 4 000 |
| | | 30 | 20 | 27 | 4 000 |
| | | 60 | 20 | 27 | 2 000 |
| | | 7,5 | 4,4 | 6 | 4 000 |
| | | 0 > > 08 tr/mn Rpm U/min v/minuto | 4 | 5,5 | |
| | | 0 > > 15 15 > > 50 | 3,7 | 5 | |
| | | 0 > > 30 | 2,5 x 4 | 3,4 x 4 | |

| | |
|-----|---------|
| | |
| V | 380 450 |
| Hz | 50 60 |
| kVA | 40 50 |

- GROUPE ELECTROGENE
 NOUS CONSULTER
 - STROMAGGREGAT
 AUF ANFRAGE
 - GENERATOR SET
 CONSULT US
 - GRUPO ELECTROGENO
 CONSULTARIOS

*
 Multiplier par 1,2 pour 450V
 Multiplizieren bei 1,2 für 450V
 Multiply by 1,2 for 450V
 Multiplicar por 1,2 para 450V

NF 52081-52082

DIN 15018 H1 B3 K3